

DC114M

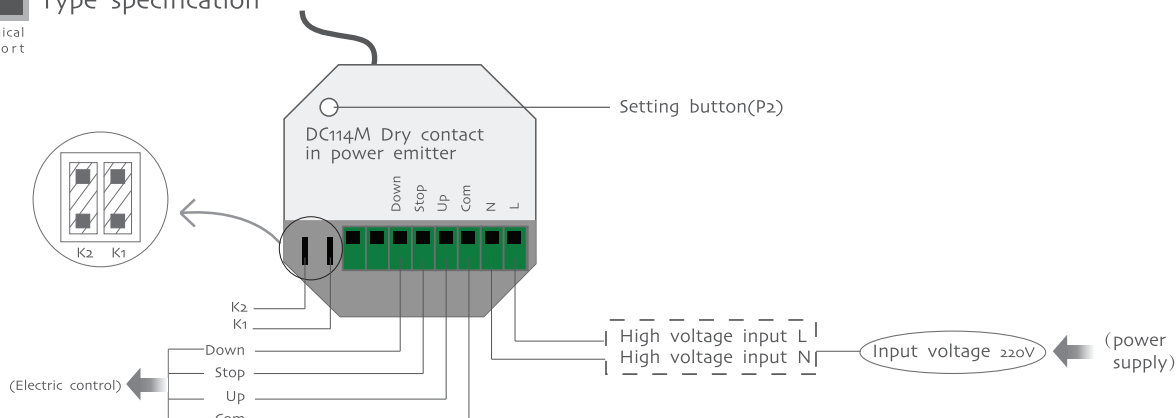
Dry contact in power emitter

Specification

Version NO.: A/02

T Type specification

Technical support



T Technical support

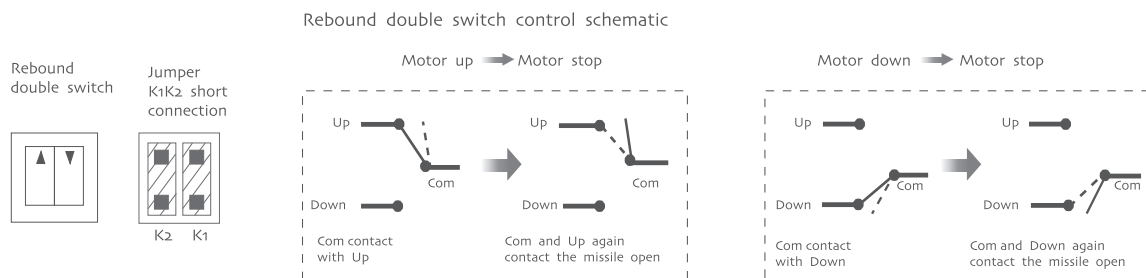
Technical support

Technical specification	Function instruction
<ul style="list-style-type: none"> • Input voltage: AC220V/50Hz • Output dry contact voltage: 220V • Transmitting frequency: 433.92MHz±100KHz • Operating temperature: -10°C ~ 65°C • Transmitting distance: outside 150 meters, inside (between two walls) 35 meters 	<p>The emitter DC114M is suitable for our company built-in receiver type motor or receiver; in different modes, the switch is different, Corresponding run upward, stop, and run downward emission command operations vary, specific reference mode description.</p> <p>⚠ Notice: Emitter couldn't be exposed to moisture and struck, so as not to affect life.</p>

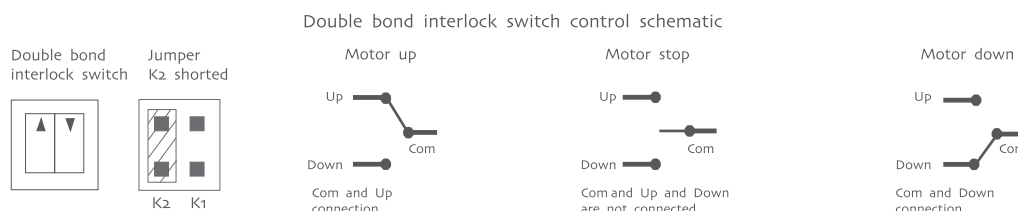
A Switching mode or ground control principle

Additional function

1- Double bond rebound switch control mode:

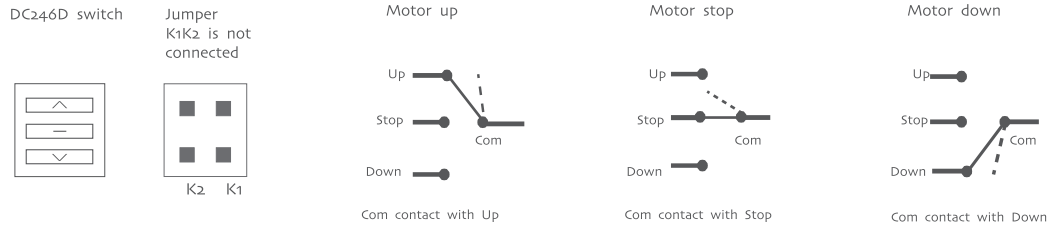


2- Double bond interlock switch control mode:



4- DC246D general switch control mode:

DC246D general switch control schematic

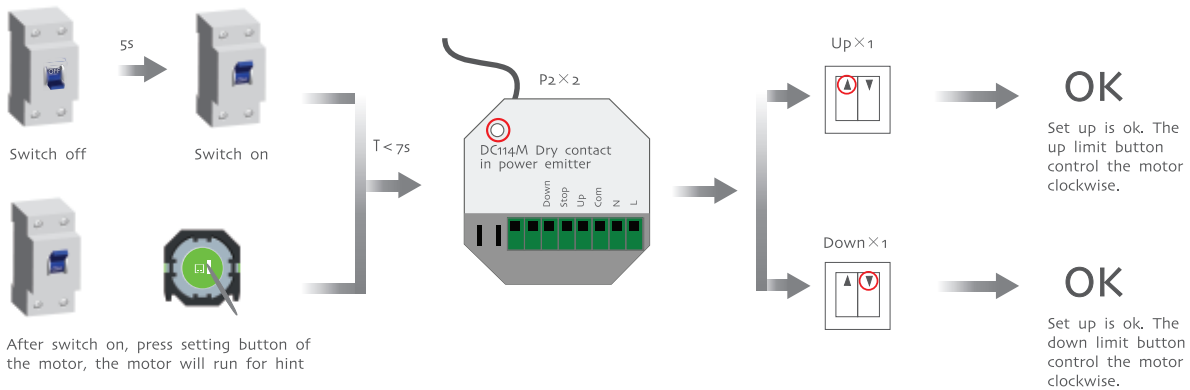


A The code method one: DC114M Dry contact control in power emitter and the motor directly to the code

Additional function



During the settings, the time between two operation must be shorter than 4s, otherwise it will quit the setting.



After switch on, press setting button of the motor, the motor will run for hint

A Code method two: DC114M Dry contact control in power emitter and motor

Additional function



① During the settings, the time between two operation must be shorter than 4s, otherwise it will quit the setting
② Emitter a is the one already matched code, while emitter b has not

